



Worship and Wonder Retreats: Sacred Space for Every Age

Worship and Wonder retreats nurture delight, facilitate healing, and inspire prayer through simple, sensory-rich, and story-centered spiritual practices. Designed for people of all ages, these retreats are especially meaningful for children, youth, and senior adults, including those living with memory loss or cognitive changes.

Rather than focusing on explanation or instruction, Worship and Wonder invites participants to experience God through music, movement, storytelling, art, silence, and gentle ritual. Faith becomes something we enter—with our whole selves—rather than something we have to understand or explain.

Children find freedom to explore faith with curiosity and joy. Youth are given space to slow down, rest in mystery, and pray creatively. Older adults, including those with memory challenges, often experience deep comfort and connection through familiar songs, textures, gestures, and sacred rhythms that awaken spiritual memory and speak directly to the heart.

"I watched a child, a teenager, and an older adult sit side by side, fully engaged in the same story and prayer. No one was rushed. No one was left out. It felt like the kind of worship where everyone belongs—and where God feels very near."

Worship and Wonder retreats remind us that God meets us exactly where we are, at every stage of life, inviting us into holy presence, shared joy, and gentle grace.

You are invited to experience Worship and Wonder during the seven-week Grace at the Gallery series, beginning February 3rd. (See the Grace at the Gallery event listing below!) Each weekly

gathering offers space to slow down, engage sacred story, and encounter God through wonder-filled practices. Registration details are available on our website.

STUDIO OPENS IN 22 DAYS!!

**Tell your
friends!**



Send to 10!

Help us grow the A Place of Grace community! In celebration of the tenth year of A Place of Grace and the TEN retreats *per month* offered where companions can gather in shared ministry, we invite you to send this email to ten people you believe would be blessed by participation in A Place of Grace retreats and tell them why you thought of them! Go ahead! Send to 10! Thank you!!

1/14/26 9:00 a.m. to noon



Mission Madness Retreat at Community Hope Center, Hope Lane, Cottage Hills, IL. A Place of Grace operates on the belief that lived discipleship is the embodiment of Jesus in the world. Join us as we support local agencies in their ministry to our neighbors in need. We'll meet at Community Hope Center at 8:45 to engage in our opening practice before we begin our work. Turn left just inside the gate and park by the building.

**RSVP for
Mission
Madness**

1/14/26 6:00 to 8:00 p.m.

Mission Madness Retreat at LoveJoy United Presbyterian Church, 2550 Rock Hill Road, Wood River, IL, in the fellowship hall at the far end of the building. Bring a pair of scissors. Bring snacks if you want! Bring friends! Let's make it a crafting party!



And if you're done enjoying your Christmas cards, you can bring those as well. We'll make them into upcycled cards, gift tags, and Advent journals. :)

RSVP for Mission Madness

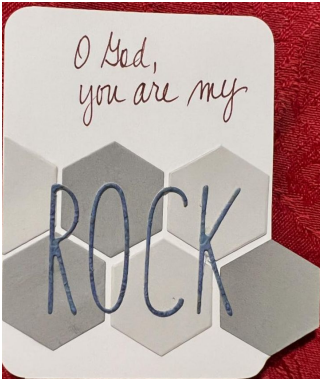
1/15/26 6:00 to 9:00 pm (CST)



Prayer Art Retreat at Von Dell Gallery & Studios, 102 E Ferguson, Wood River, IL. Can you form these letters: i, s, c, o? Can you make a dot like this: . Then you can tangle! Seriously! It's that easy! Join us for worshipful work as we learn to create art in response to prayer and scripture. We're pretty fun. :) Hybrid option available via Zoom.

RSVP for Prayer Art

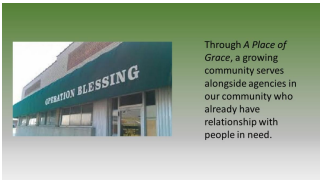
1/21/26 6:00 to 8:00 pm (CST) -- **Register by THIS WEDNESDAY!**



Faithbooking Retreat on Zoom. I wonder if among your New Year's resolutions are "craft more" and "journal" and "spend more time with God." If so, A Place of Grace can help with that! Scrapbook your faith from the comfort of your own craft room using your own tools and found materials to create a visual journal of your faith journey. I'll guide you! **Please RSVP by 1/14 if you plan to participate.**

RSVP for Faithbooking

1/28/26 9:00 a.m. to noon



Through A Place of Grace, a growing community serves alongside agencies in our community who already have relationship with people in need.

Mission Madness Retreat at Operation Blessing, 18 E Lorena, Wood River, IL. Working with local agencies is a blessing and a joy! More hands make light work, and we sure have fun doing it! **Please RSVP by 1/23 if you plan to participate.** We know you'll have a great time!

RSVP for Mission Madness



A Place of Grace pastor, Julie Gvillo, will be preaching:

2/1/26 Church of the Master United Church of Christ, Florissant, MO. Worship begins at 9:30 a.m.



7:30 to 8:00 a.m.

8:00 to 8:30 a.m.

Taste of a Practice for early birds, people on the way to work, and those with mobility challenges. Downstairs; use the back door from the parking lot.

9:00 to 11:00 a.m. 2-hour retreat

11:30 a.m. to 12:00 p.m.

12:00 p.m. to 12:30 p.m.

12:30 p.m. to 1:00 p.m.

Lunch Hour Taste of a Practice.

1:15 to 3:15 p.m. 2-hour retreat

3:30 to 4:00 p.m. Elementary students'

4:15 to 4:45 p.m. Middle School students

5:00 to 5:30 p.m. High School students

5:45 to 6:15 p.m. End of Day

Taste of a Practice

All retreats from 11:30 a.m. to 6:16 p.m. will be held upstairs in the studio.

7:00 to 9:00 p.m. 2-hour retreat, downstairs; use the back door from the parking lot.



You are invited to join us for "Grace at the Gallery" each Tuesday for seven weeks, beginning February 3rd. Same practice all day. Different practice each week! See the side-bar for the time that works best for you.

2/3 Practice: Prayer Art

2/10 Practice: Worship and Wonder

2/17 Practice: Audiendo Divina

2/24 Practice: Coaching Cohort

3/3 Practice: Selah

3/10 Practice: Mission Madness Workshop

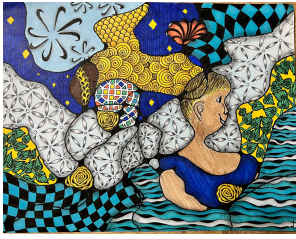
3/17 Practice: Healing and Wholeness

RSVP by 1/27 for the full seven-week series or one week ahead for individual retreats according to your schedule.

RSVP for Grace at the Gallery

2/11/26 1:00 to 4:00 p.m.

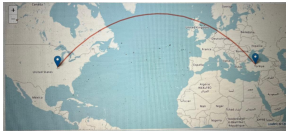
Artful Expressions of Grief retreats



begin. This is a six-retreat series that takes place over three months on the 2nd and 4th Wednesdays of the month (2/25, 3/11, 3/25, 4/8, and 4/22 for the first six-retreat series). Each retreat will feature a different practice *in addition to art* where companions can receive pastoral care and communal support as they work through grief over *any kind of loss*. Please RSVP by 1/27. There is a materials fee for this retreat (more info to come). No previous art experience required.

[RSVP for Artful Expressions of Grief Series](#)

2/18/26 Ash Wednesday



Walk to Jerusalem begins! On Wednesday, February 18th, the Walk to Jerusalem will begin with daily meditations/spiritual practices via email and Facebook group and podcast, daily check-ins, and our communal effort to walk the 6415 miles to Jerusalem. Register today! And invite friends!!

[RSVP for Walk to Jerusalem](#)

A Place of Grace is offering-based. Cash offerings may be made in person. Checks may be mailed to A Place of Grace, 348 Snake Road, Dorsey, IL. Electronic offerings may be made via Venmo (@A-Place-of-Grace) or PayPal.me/JulieGvillo.

If you no longer wish to receive this email, please reply with "Unsubscribe" in the body of the email. Thank you for your continued support of A Place of Grace and its ministry in the community and beyond!

[Make an Offering](#)

[Visit our Website](#)

[Email us](#)

[Call](#)



